



aspire²
education

PROSPECTUS
2022





Our people achieve their
goals

CONTENTS

03

Welcome

11

Our Campuses

04

Why Choose Aspire2

13

Aspire2 Work

05

Part of the Aspire2 Group

14

Our Programmes

07

Our Values

19

Key Information for Students

09

Free Programmes

20

How to Enrol

WELCOME!



Ready to take the next big step in your career?

If you want to be the best, you need to learn from the best. At Aspire2 Education our tutors are experts in their fields, highly passionate about their profession and eager to share their knowledge and skills.

If you are looking for a dynamic and supportive study environment – an environment that will unlock your true potential – you're in the right place.

Our friendly, expert tutors will build your industry knowledge, develop your practical skills and equip you with the soft skills you need for employment success in your chosen field.

We are a “whanaungatanga” – an extended family that gives each member a sense of belonging – and you will become a valued member of that family.

As a student, Aspire2 Education has everything you need – friendly support whenever you need it with your study or getting a job. We are here to help and encourage you.

We can't wait to meet you on your first day!
Welcome to Aspire2 Education

Sunil Bhargav- GM

WHY CHOOSE ASPIRE2 EDUCATION?

OUR PEOPLE ACHIEVE THEIR GOALS

Aspire2 Group is committed to providing a rich and diverse learning environment. We are therefore excited to launch Aspire2 Education, offering our world-class programmes to domestic students. Delivering relevant and up to date skills and hands-on experience are what we stand for, and we're proud of the thousands of graduates who have successfully completed their study with us and moved on to employment or further learning.

Strong ties to industry set us apart from the rest. Here at Aspire2 Education, the programmes we offer are closely designed and aligned with what New Zealand employers are looking for so our skilled graduates are in high demand.

Our Vision to 'enable our people to achieve their goals' is embedded in everything we do. We will help you set ambitious and achievable goals and we are committed to enabling you to achieve them.



Expert Tutors

Launching or extending your career begins with a positive, engaging study experience. Whatever path you are taking, that's just what you will get by working with our dedicated and talented teachers, and enjoying our welcoming campuses.



Happiest Campus

Our student experience team are dedicated to creating life long memories. Life at Aspire2 Education isn't all hard work. It's good to balance study with plenty of fun, and that's why we organise activities to encourage you to mingle with other students.



Employment Opportunities

The Aspire2 Work team are dedicated to helping you find work – whether that is part time work while you study, or full time work in your holidays or when you have completed your studies.



Aspire2 Group Limited
is New Zealand's
leading private provider
of international and
domestic education and
vocational training.

**PART OF
ASPIRE2
GROUP**



Aspire2 Group provides education and vocational training to domestic, international and business to business students. Our vision is to create future opportunities for our students by providing world class programmes. Our overarching objective is to deliver the best possible employment outcomes for our students.

Aspire2 Group has three divisions across international, domestic and business to business. This formidable combination delivers not only the highest quality education experience, but internationally recognised qualifications, pathways and opportunities to meet and work with New Zealand employers.

Together we are focused on creating your future opportunities.

International

Aspire2 International
NZ Welding School

Domestic

Aspire2 Education
NZ Welding Trades & Services
Aspire2 Business Management Programme
Naturopathic College of New Zealand
Solomon Group

Business to Business

Aspire2 Business Workplace Communication
Safety 'n Action

OUR



LEARNING IS STUDENT FOCUSED

INDIVIDUAL CAPABILITIES AND GOALS ARE
RECOGNISED





DIVERSITY IS CELEBRATED

FAIRNESS IS FUNDAMENTAL

VALUES



FREE PROGRAMES



The Targeted Training and Apprenticeship Fund (TTAF; also known as free trades training) supports learners to undertake vocational education and training without fees.

The funding is targeted towards industry skill needs where demand from employers for these skills will continue to be strong, or is expected to grow, during New Zealand's recovery period from the impacts of COVID-19.



There has never been a better time
to study with **Aspire2**

Due to this funding both the NZ Diploma in IT Technical Support L5 and NZ Diploma in Systems Administration L6 programmes delivered by Aspire2 Education are FREE* to domestic students.

Eligibility: These fully-funded programmes are available to NZ Citizens, Permanent Residents & Australian Citizens. Programme specific eligibility criteria also applies.



Auckland.....



.....Christchurch



OUR CAMPUSES

Aspire2 Education has two campuses in New Zealand's most vibrant cities. Located close to shopping malls, restaurants and theatres our campuses offer students everything they need right on their doorstep.

Aspire2 Education nurtures relationships with the business communities in each city, creating opportunities for you to get practical experience through part time employment while you study, and helping you launch your career.

Each campus has the facilities you need including: a student café and courtyard, free wi-fi, a student library (Christchurch eLibrary only).

Auckland

Our Auckland campus is located in the heart of the city amongst the country's top art, culture, and commerce.



Christchurch

Our campus is centrally located two city blocks away from Christchurch's famous photographed sites and landmarks.



ASPIRE2 WORK

OFFERING THE BEST WORK OUTCOMES



The Aspire2 work team works with your chosen industry to give you the best chance of landing a job.

While you are still studying, Aspire2 Work will help you find part time work in your industry so you can be experienced and work ready when you graduate. You will also be supported to improve your interview skills, CV and cover letter. We will help you through the whole process - coaching, setting up job interviews - anything you need to help you get the right job.

As a graduate Aspire2 Work helps graduates find relevant employment. We partner with industry and have strong relationships with employers seeking out our highly skilled graduates.

OUR PROGRAMMES



NZ Diploma in Information Technology
Technical Support **Level 5**

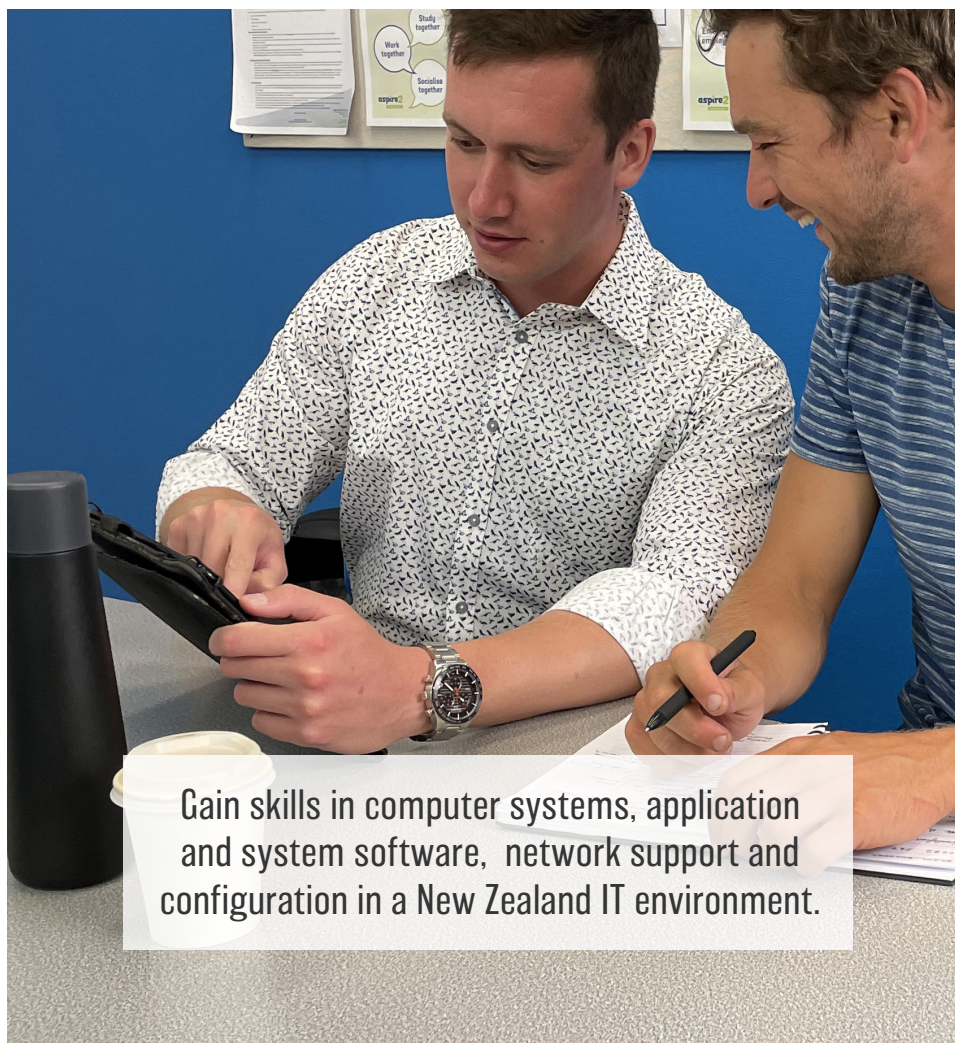
NZ Diploma in Systems Administration
Level 6



*NZ domestic students
study at no cost thanks
to the TTAF Scheme.



Must be a NZ Citizen
or Resident



Gain skills in computer systems, application
and system software, network support and
configuration in a New Zealand IT environment.

NEW ZEALAND DIPLOMA IN IT TECHNICAL SUPPORT

LEVEL 5

A one-year programme that will equip you with the technical knowledge and hands-on experience needed for technical support positions. You will be able to pursue a IT/ Computing career with more confidence or move on to further study.

What will I learn?

You will learn to develop basic computer applications, administer databases, and gain an understanding of user support standards. New Zealand's professional, legal, and ethical principles and practices are also covered in this programme.

Core Papers

There are six modules that include the following topics:

- Modern Data Communications
- Applied Communications
- Systems and Applications Support
- Systems Installation and Maintenance
- Application Design and Development
- Database Development and Design

Employment Pathways

Graduates will have the skills and knowledge to work in IT roles such as computer technician, help desk and technical support officer, entry level network administrator, network engineer, and applications support analyst roles.

Am I eligible?

This programme is open to anyone aged 18 and over.

Students must have a certificate in Computing Level 3 or Level 4; or completion of Year 12 schooling or international equivalent; and/or appropriate related work experience.

In order to receive free training under the Targeted Training and Apprenticeship Fund, students must be New Zealand citizen or resident or an Australian citizen.

Applicants must be proficient in English.

Our courses are taught in English, so you need to be able to read and write well in English to understand the course content and requirements.



Level 5 Diploma

120 Credits



Duration

1 Academic Year



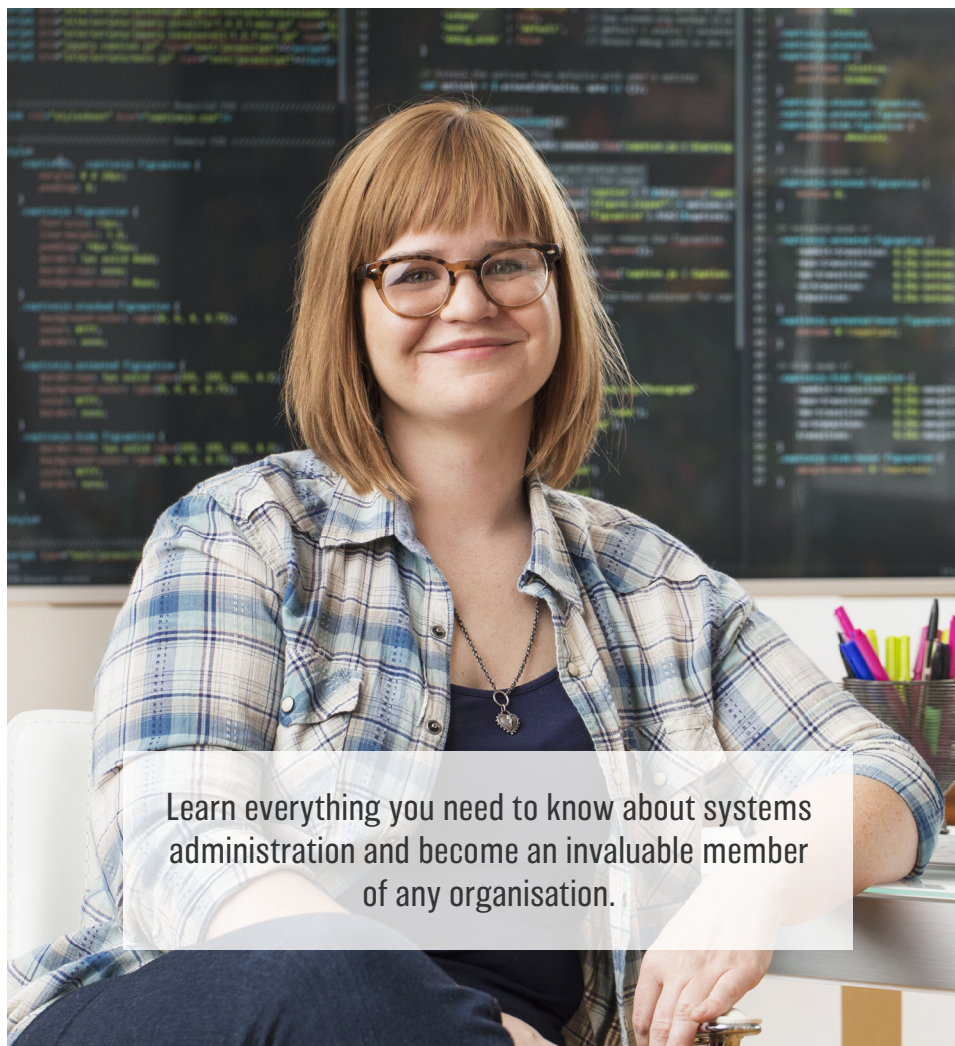
Locations

Auckland, Christchurch

*NZ domestic students
study at no cost thanks
to the TTAF Scheme.



Must be a NZ Citizen
or Resident



Learn everything you need to know about systems
administration and become an invaluable member
of any organisation.

NEW ZEALAND DIPLOMA IN SYSTEMS ADMINISTRATION

LEVEL 6

Calling all aspiring systems administrators and desktop analysts. New Zealand needs you! Build your technical and specialist skills in IT support with this one-year diploma and gain an internationally relevant qualification that will fast track your career. Expert tutors, practical training, and great pathways to employment.

What will I learn?

Learn to implement technologies for systems and network services, manage a directory service, and master automated system and applications software deployment. You'll also develop data storage solutions, write scripts to automate standard system procedures and administer infrastructure for remote network access.

Core Papers

There are six modules that include the following topics:

- Network Services
- Active Directory Services
- Infrastructure Virtualisation
- E-communications (project)
- Applied Communications
- Automated Systems Deployment

Employment Pathways

Graduates will have the skills and knowledge to gain employment in roles such as IT technician, help desk, Tier 1 and 2 desktop support, systems administration or in applications support.

Graduates also have the background to progress into more advanced roles such as senior system administrator or application support analyst roles.

Am I eligible?

This programme is open to anyone aged 18 and over.

Students must hold the New Zealand Diploma of Information Technology Technical Support (Level 5) ; or equivalent knowledge, skills and experience.

In order to receive free training under the Targeted Training and Apprenticeship Fund, students must be New Zealand citizen or resident or an Australian citizen.

Applicants must be proficient in English. *Our courses are taught in English, so you need to be able to read and write well in English to understand the course content and requirements.*



Level 6 Diploma

120 Credits



Duration

1 Academic Year



Locations

Auckland, Christchurch

KEY INFORMATION FOR STUDENTS



Student fee protection

The New Zealand Government requires all New Zealand Qualifications Authority (NZQA) registered Private Training Establishments to protect student fees paid to them in advance. We are registered for Fee Protect through The Public Trust, which has an unsecured capital guarantee from the New Zealand Government. For further information visit www.feeprotect.co.nz



Pastoral care

Aspire2 Education promotes the wellbeing of students and supports them during their studies. We have agreed to observe and be bound by the Code of Practice for the Pastoral Care of Domestic Students. Copies of the Code are available on request from Aspire2 Education or from the NZQA website at www.nzqa.govt.nz. You should make sure you have read and understood the Code.



Warnings

Formal warnings will be given to students who take part in: poor attendance, academic misconduct, and behavioural misconduct. All warnings will be recorded, and warnings remain valid for the duration of the programme of study. In cases of Academic Integrity or Behavioural Misconduct where the violations are considered to be particularly significant an immediate Final Warning can be issued, or the matter can be immediately referred to the Disciplinary Committee.



Student withdrawals and fee refunds

Our fee refund policy is in accordance with the Education Act 1989 and amendments, and applies to international and domestic students. Please refer to our website for details aspire2education.ac.nz





HOW TO ENROL

Launch your future.

Complete your application in 4 easy steps.

1

Choose your study programme

Check you meet

- ✓ Academic and age entry requirements
- ✓ Laptop provided at no additional cost for diploma students
- ✓ Register your interest online at aspire2education.ac.nz

Detailed information on entry requirements and programme details can be found at aspire2education.ac.nz

2

Prepare supporting documentation

- ✓ Certified copy of your academic transcripts and/or certificates
- ✓ Certified copy of your English test results (Academic IELTS, LanguageCert or equivalent if applicable)
- ✓ Certified copy of your passport identification page
- ✓ recognition of prior learning. If you already have other tertiary qualifications or previous work experience you may be eligible for credit transfers

3

Apply online or through a representative

- ✓ Email info@aspire2education.ac.nz to receive your enrolment application form, you can also attach your supporting documentation

4

Accept your offer

Once your application is approved, you will receive an offer letter which includes instructions on how to:

- ✓ Accept your offer
- ✓ Pay your invoice if applicable
- ✓ Provide outstanding documents if required



aspire²
education

Contact us

 09 555 5400 0800 277 338 (asp edu)

 info@aspire2education.ac.nz

Auckland Campus
25 Federal Street
Auckland Central

Christchurch Campus
76 Peterborough Street,
Christchurch Central

Check us out on



[aspire2education.ac.nz](https://www.aspire2education.ac.nz)



[Aspire2Education](https://www.facebook.com/aspire2education)



[aspire2education.nz](https://www.instagram.com/aspire2education)

WEBSITE



Disclaimer:

Aspire2 Education has used reasonable care to ensure that the information in this publication is accurate at the time of publication. However development of our programmes is ongoing and changes may occur (including to Government policy). Aspire2 Education reserves the right to change or amend any programme details. Before making a final decision on a programme please contact us on info@aspire2education.ac.nz for the latest information.

